

ProFormX™

LED LIGHT KIT

INSTALLATION INSTRUCTIONS

Fits Club Car® Precedent®

PART# 55-101



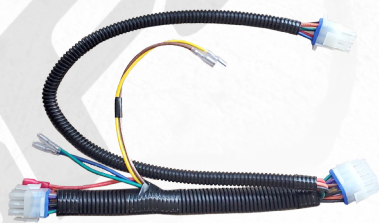
BASIC LIGHT KIT



Headlight & Bumper



Tail Lights



Front Harness



Light Switch



Fuse Assembly

**Sold Separately
Electric 2008.5 - up*



Bucket Harness
Part# 55-102

**Sold Separately
Gas 2004 - up*



Gas Harness
Part# 55-103

TOOLS NEEDED

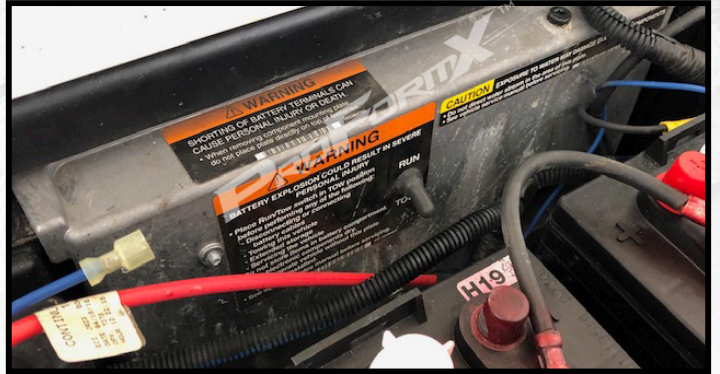
- T15 Torx socket
- T30 Torx socket
- T40 Torx socket
- 13mm socket
- 10mm wrench
- Small Flat Head
- Screwdriver
- #2 Phillips Tip
- 15/32" Drill Bit
- 1-1/4" Hole Saw Bit
- Rotary Cutting Tool
- Wire Snake

PARTS LIST

Basic Light Kit

- Headlight & Bumper
- Tail Lights
- Front Harness
- Fuse Assembly
(Gas only)

STEP 1



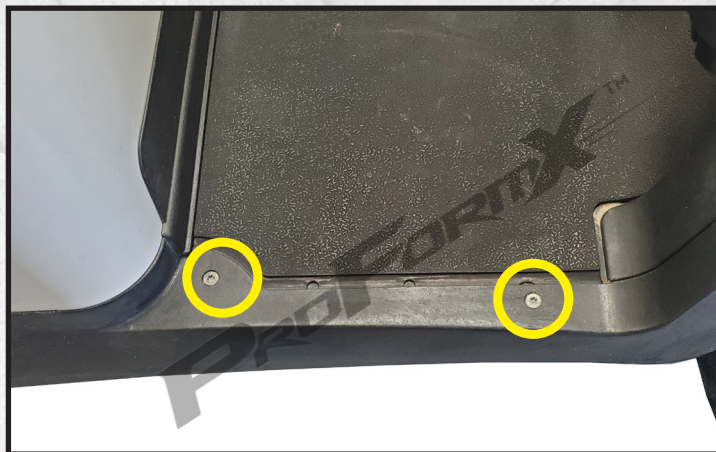
STEP 2

STEP 3



STEP 4

Remove and retain the 2 factory screws holding each floormat retainer using a T40 socket. You do NOT need to remove retainers just screws.

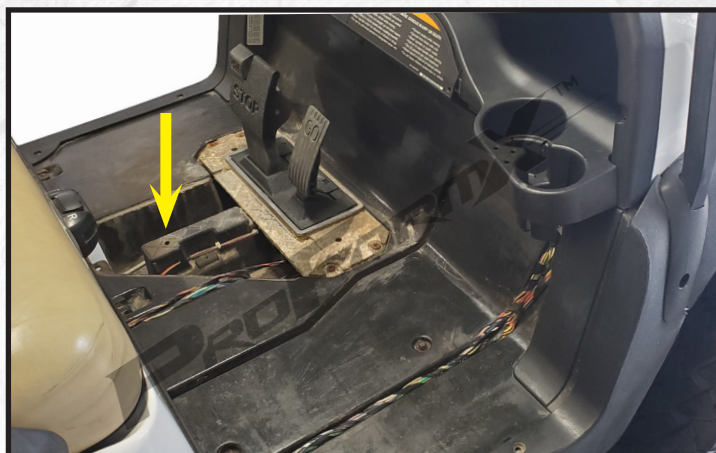


STEP 5

Remove and retain the pedal access cover.

NOTE: If you are installing this kit on a 2008.5 and older cart with a factory pre installed harness skip to Step 11.

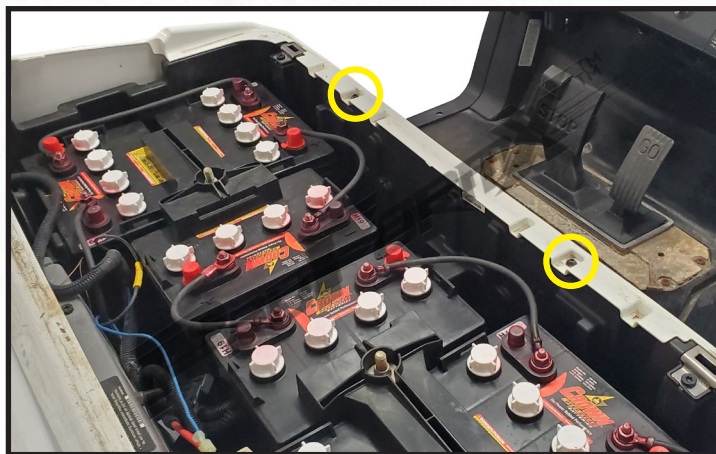
*****If installing on a Gas cart skip to STEP 11.**



STEP 6

Temporarily remove the front seat bottom.

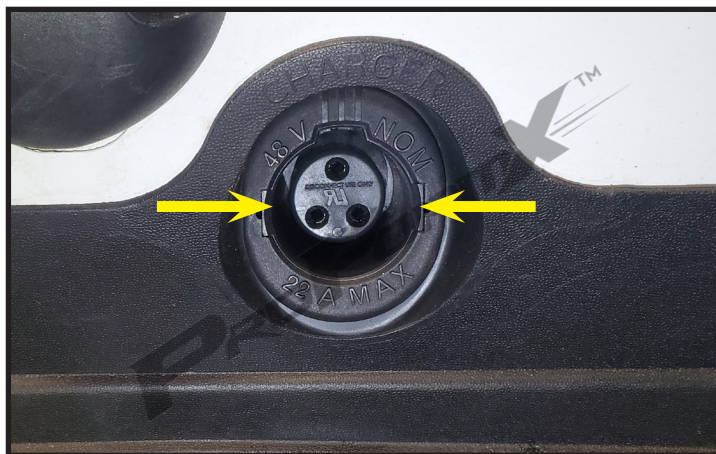
Using a T30 Torx socket, remove and retain the body screws shown.



STEP 7

Using a small screw driver, pry free the battery charge receptacle cover.

Note: Use indentations on the inside of ring to pry free and avoid damaging cover.



STEP 8

Remove and retain the 3 factory screws that secure the body trim to the floorboard using a T40 Torx socket.

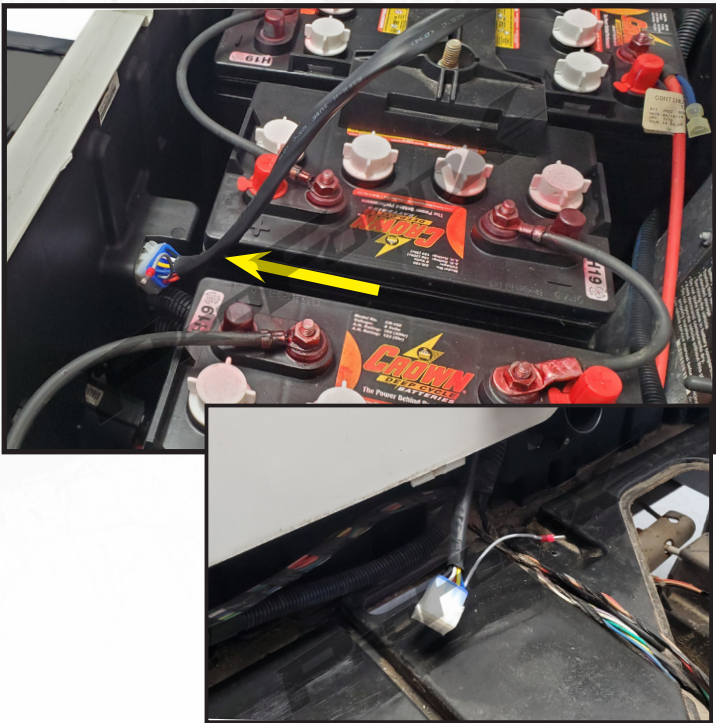
Temporarily remove body trim.



STEP 9

Feed the 12 pin connector from the bucket harness (shown below) into the access hole located at the front of the battery compartment as shown.

***Leave rear half of harness in battery compartment until STEP 13.



Bucket Harness Layout Part# 55-102

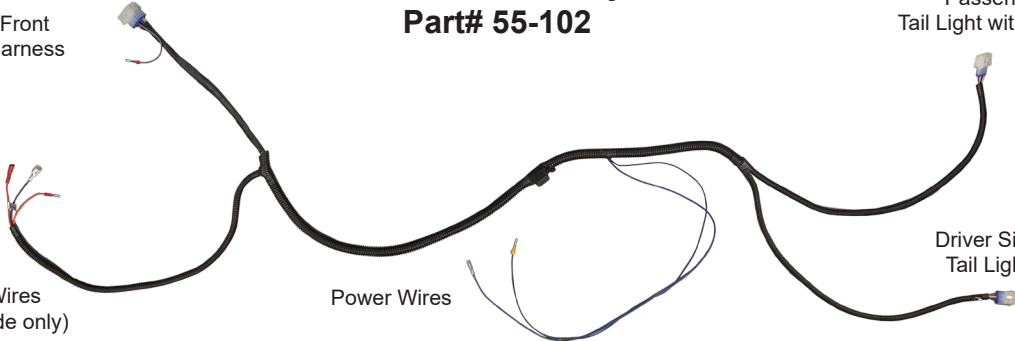
Passenger Side
Tail Light with Yellow Wire

Driver Side
Tail Light

12 Pin To Front
Headlight Harness

Brake Light Wires
(used for Upgrade only)

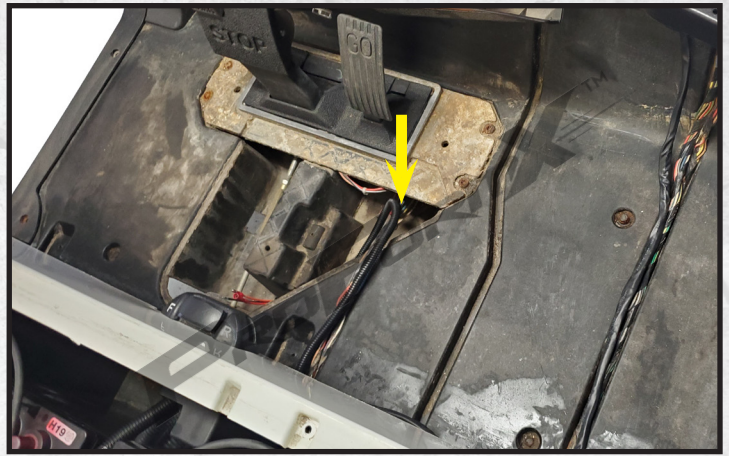
Power Wires



STEP 10

Continue to feed harness through access hole until the brake wire hookups reach the pedal access as shown.

Use one of the Passenger side floor channels to lay Bucket Harness in and run up to front dash area.



STEP 11

To mark the cut out hole for tail light connector, measure up from the top of the rear underbody 1-1/4" and make a horizontal line.

Then measure over 2-1/4" from where the curve of the rear body stops and make a vertical line.



STEP 12

Using a 1-1/4" hole saw or a rotary cutting tool, cut out a small hole as shown using the intersecting marks as a center point.



Note: On Gas carts and 2004 -2008 electric carts skip ahead to STEP 15.

STEP 13

Feed tail light connectors through center of battery pack and route Passenger side (center yellow wire) connector to the passenger side as shown.

Note: Make sure you route light harness under the battery cables and between the batteries as shown.



STEP 14

Using a wire snake or wire hook, pull each tail light connector through the rear access hole located in the rear corners of the battery compartment.



STEP 15

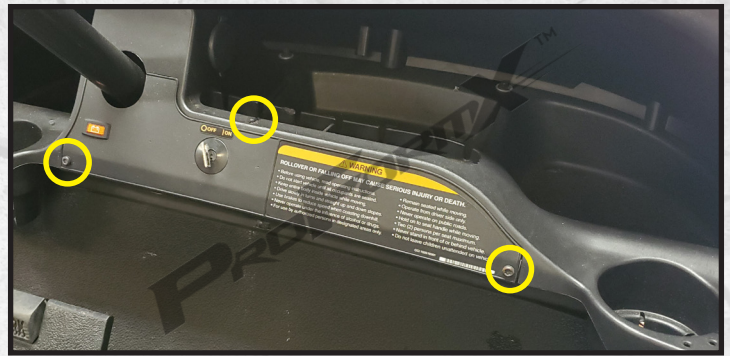
Connect the tail lights to harness and secure with the supplied screws.

Just snug screws. Do NOT overtighten.



STEP 16

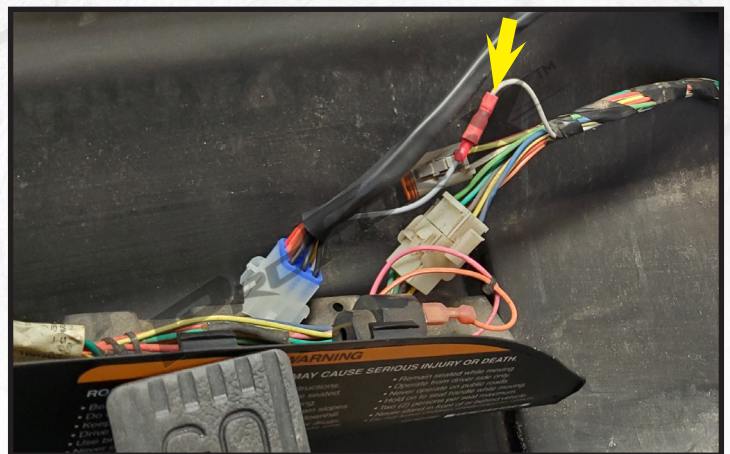
Remove and retain the 3 factory screws located in the front dash as shown using a T15 and T30 Torx socket. Retain all.



STEP 17

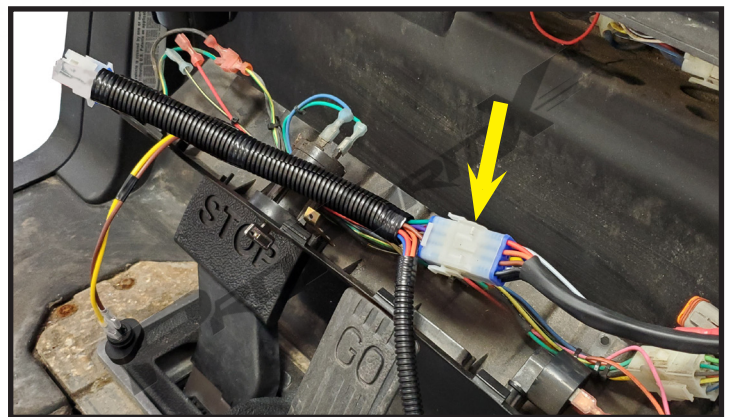
Located behind the dash will be a small gray wire with a red (female) bullet connector coming from the main cart harness. Plug this wire into the gray wire with red (male) bullet connector coming out of the 12 pin of your Bucket Harness.

Note: If installing this kit on a gas cart, refer to gas harness instructions. **Gas harness Part# 55-103.**



STEP 18

Plug in supplied Front Harness 12 pin connector to the Bucket Harness 12 pin connector as shown.



STEP 19

Feed 6 pin connector from Front Harness into access hole located on the right side of dash cavity.



STEP 20

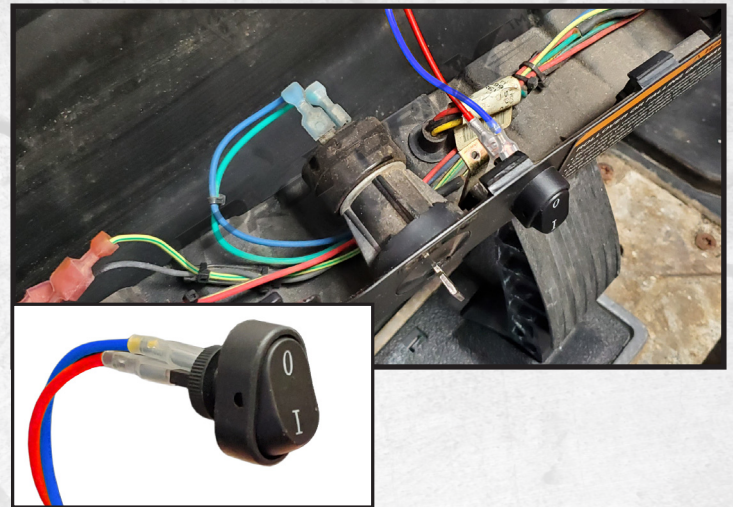
There are two indentations on the front dash panel, choose one for your desired switch location.

Using the indentation as a guide and a 15/32" drill bit, drill out a hole for your switch.



STEP 21

Remove nut on back of switch. Insert switch into dash panel hole and secure in place using nut. Attach wires using the examples on the right.



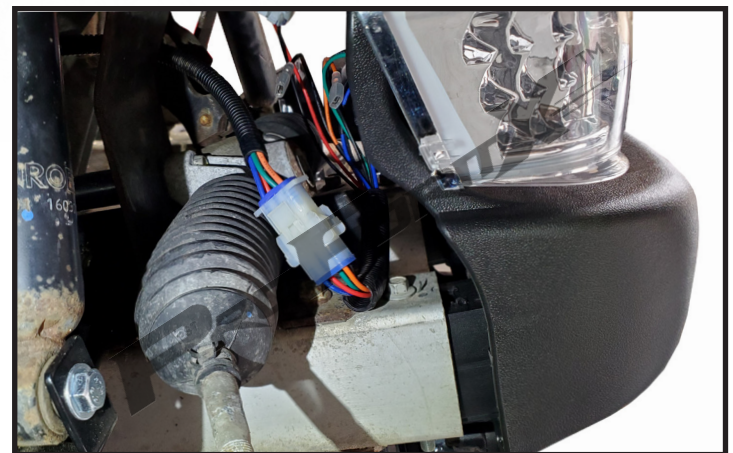
STEP 22

Safely tuck Harnesses into dash cavity. Reattached dash panel using retained hardware from STEP 16.



STEP 23

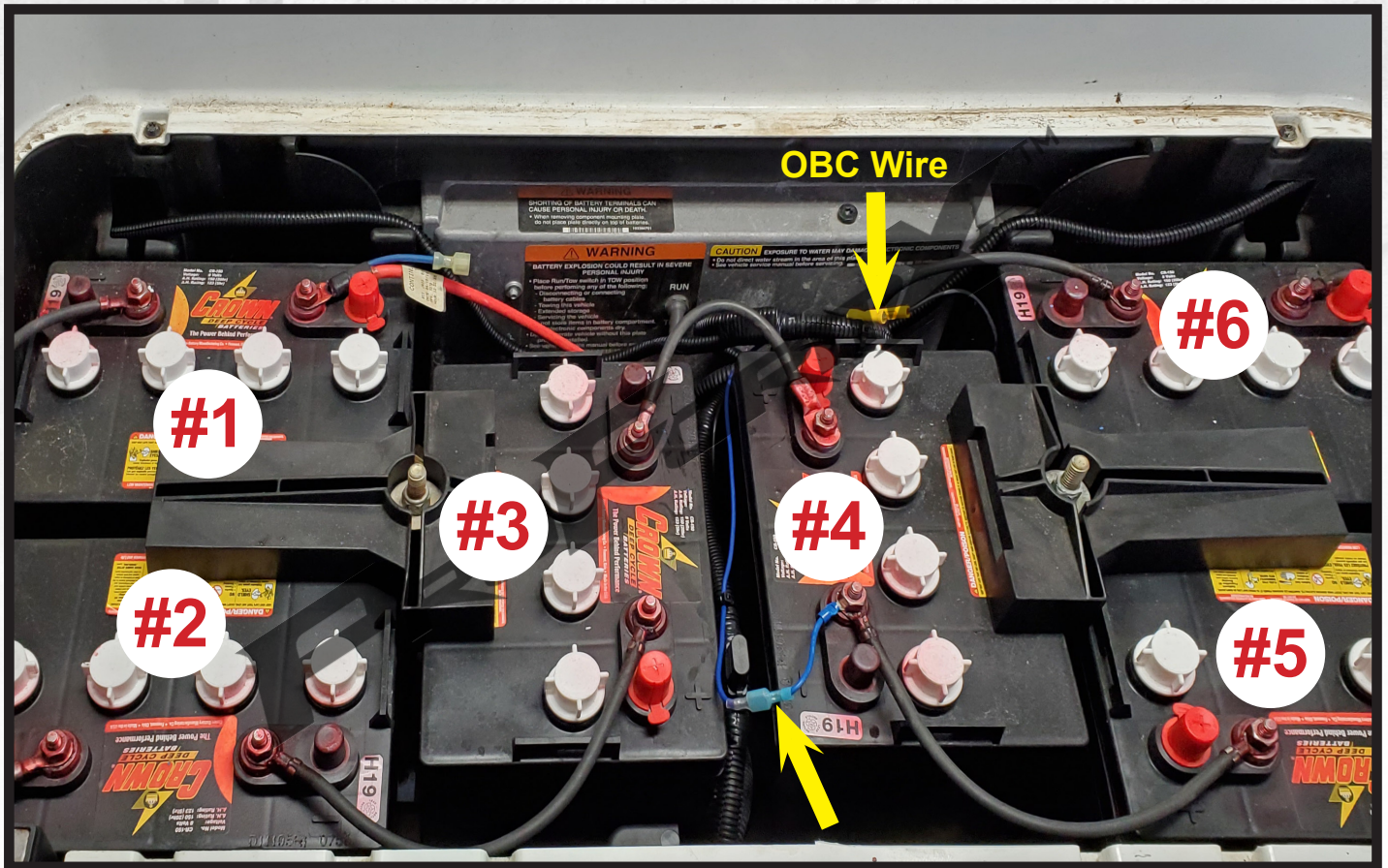
Safely route 6 pin connector from Front Harness down to the Headlight. Plug 6 pin from Harness into 6 pin from Headlight.



8V BATTERY CONNECTIONS

If installing on a 2008.5 and newer cart with 6 x 8volt batteries:

- Locate the Black wire with (female) yellow bullet connector coming from the OBC behind battery #4.
 - Plug in the yellow (male) bullet connector from the Bucket Harness here.
- Attach the blue (female) spade connector from the Bucket Harness into the blue (male) spade connector coming from the Negative terminal of Battery #4 as shown.
 - **Note:** Some battery packs may no longer have a blue wire here, you may need to cut the spade connector off and add a ring terminal connector to attach it at the Negative terminal of Battery #4.

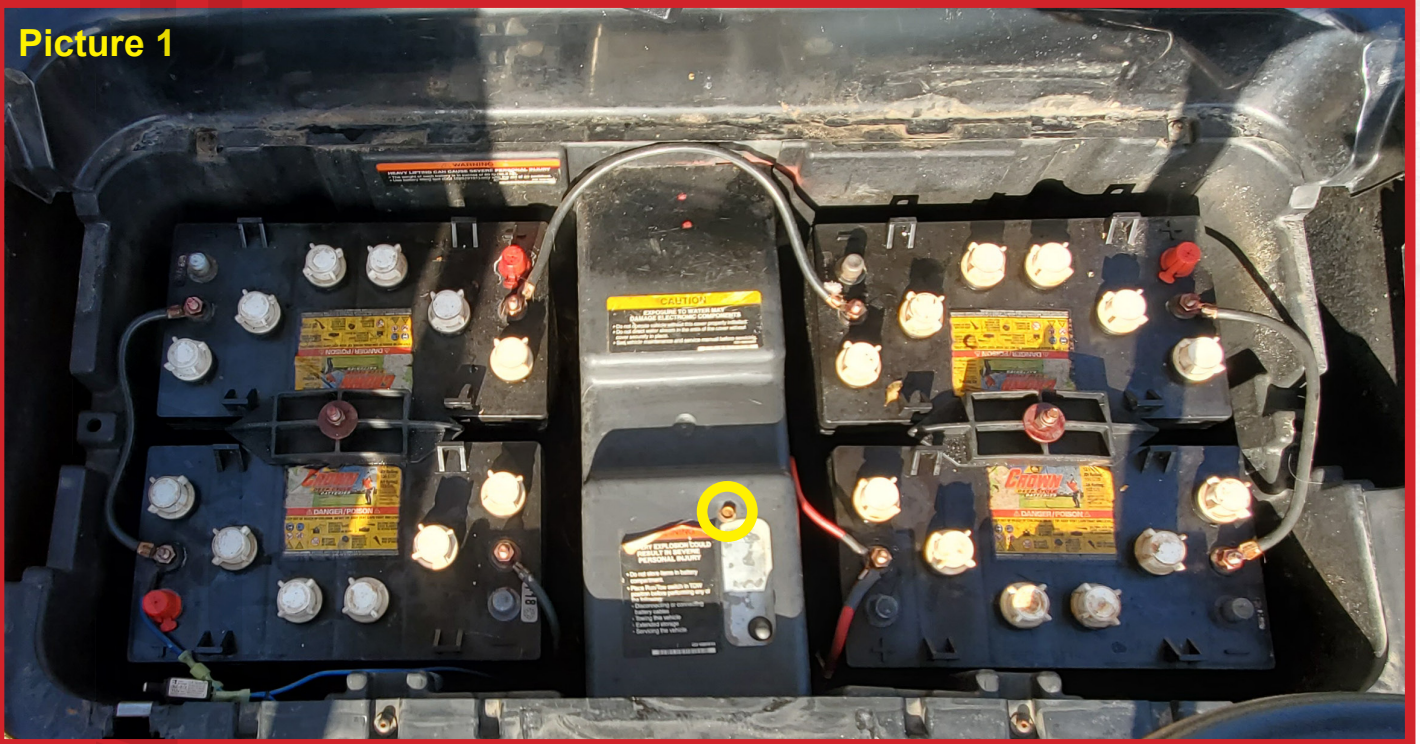


12V BATTERY CONNECTIONS

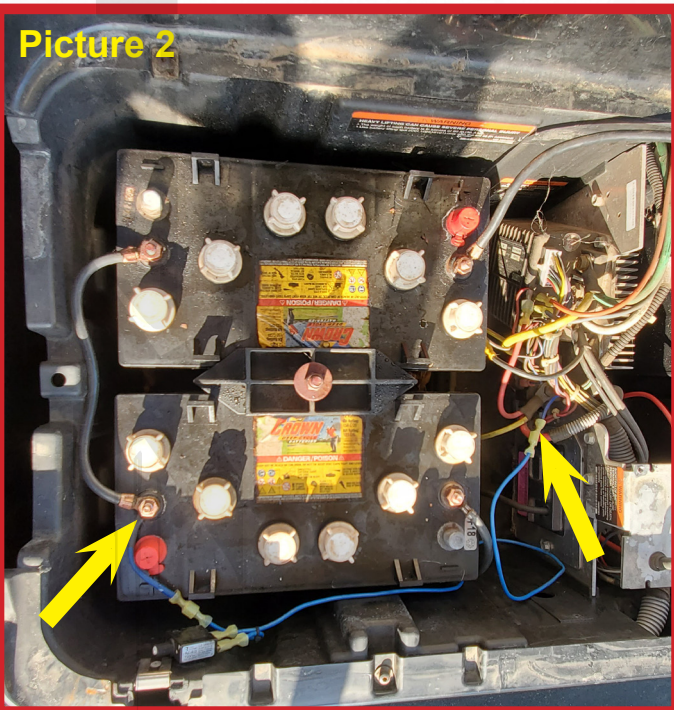
If installing on a 2008.5 and older carts with 4 x 12volt batteries:

- Using a 10mm socket, temporarily remove the bolt holding the center controller cover in Picture 1.
- Connect the fuse assembly to the front passenger battery positive terminal as shown in Picture 2.
 - Attach the other end of the fuse assembly to the blue wire coming out of the main cart harness as shown
- Reattach console when finished.

Picture 1



Picture 2



ProFormX

Club Car®, Precedent®, and DS® are registered trademarks of Ingersoll Rand, Inc. E-Z-GO®, TXT®, and RXV® are registered trademarks of Textron Innovations, Inc. ("Textron"). Yamaha®, G-14®, G-19®, G-22®, G-29®, and Drive2® are registered trademarks of Yamaha Golf-Car Company and Yamaha Motor Corporation ("Yamaha"). Reference to Club Car®, E-Z-GO®, or Yamaha® or their associated trademarks and products is only for purposes of identifying golf carts with which this ProFormX™ product is compatible. ProFormX™ products are aftermarket parts and are not original equipment parts. ProFormX™ is not connected or affiliated with or sponsored by Club Car®, E-Z-GO®, or Yamaha® or endorsed by Ingersoll Rand Inc®, Textron Innovation Inc®, or Yamaha Golf Cart Company®.

MYPROFORMX.COM